

CERTIFICATE OF LOCATION OF GOVERNMENT CORNER

EAST QUARTER Corner of Section 12, Township 108N, Range 39W

5th Principal Meridian, State of Minnesota, County of MURRAY

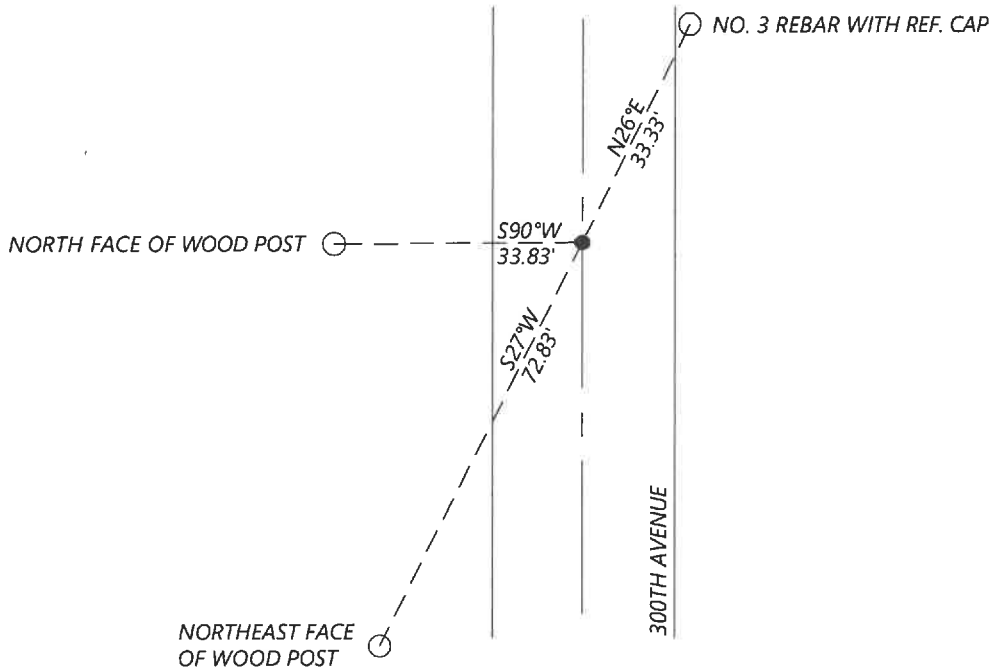
At the corner location shown on the sketch:

On 09/14/2020 found a 1.5" X 2.5" IRON ROD, DOWN 1FT.

left monument as found lowered monument removed monument (explain)

On _____ placed a _____

SKETCH OF REFERENCE TIES



N.T.S.

Statement of evidence for this corner location is on back of this page.

I hereby certify that this document was researched and prepared by me or under my direct supervision and that I am a licensed Land Surveyor under the laws of the State of Minnesota.

Signature [Signature]

Date 6/17/2021 License No. 45874

Title:

- Land Surveyor
- Professional Engineer
- County Surveyor
- County Engineer

OFFICE OF THE COUNTY RECORDER

County of Murray

I hereby certify that this document was filed in the Co.

Recorder's office at _____ M. on the _____ day of _____ A.D. 20

County Recorder [Signature]
JUN 22 2021
by _____, Deputy

DOCUMENT NO. _____

Statement of Evidence:

East Quarter Corner of Section 12, Township 108 North, Range 39 West, 5th Principal Meridian, Murray County, Minnesota.

1861 July, GLO Notes: Set post on mound.

Undated, Survey record for Section 12 shows that the government corner was found. A distance of 2639.5ft is shown to the Northeast corner and 2650.0ft is shown to the Southeast corner.

1900 Cottonwood County resurvey shows a distance of 2637.5ft to the Northwest corner of Section 7 and 2651ft to the Southwest corner of Section 7.

2003 September, A survey in Section 7 by Perry Zieske shows a found 1.5" x 2.5" cast iron monument at the corner.

2012 September, A survey in Section 12 by Robert Sikich shows a found iron monument at the corner.

2020 September, Westwood Professional Services searched and found a 1.5" x 2.5" iron rod at the corner per 2003 Zieske survey. The iron is believed to have been set from the 1900 Cottonwood County resurvey. I accepted the found monument and set reference ties.

Analysis of the recovered data, field evidence and survey measurements, indicates that the monument found is the correct perpetuation of this corner. For additional information concerning this corner please contact Westwood Professional Services.